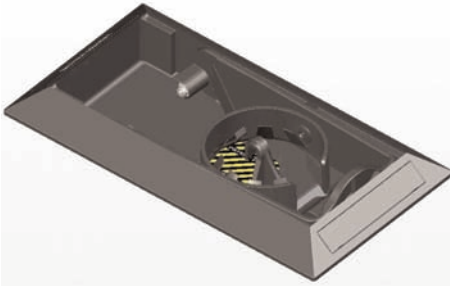
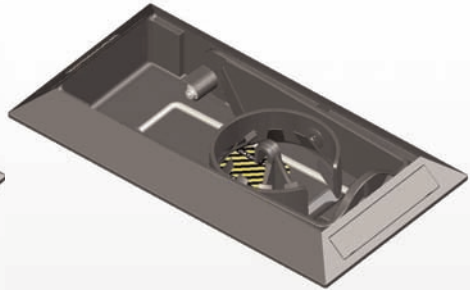
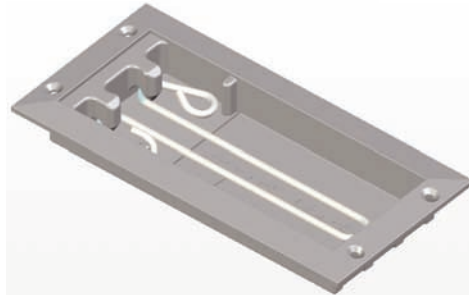


User's Manual

Track 6 / Track 6 Twin / Track 9 Built in IV-bottle holders

**TRACK 6****TRACK 6 TWIN****TRACK 9**

This appliance conforms with the Directive 93/42/CEE "Medical Devices"

Guarantee of Quality system for the production and the final control of the products certified by the notifying body TÜV SÜD Product Service GMBH

INDEX

General Information	page 2	Operating Instructions	page 3
Warnings	page 2	Maintenance and Cleaning	page 4
Description of Product	page 2	Accessories and Spare parts	page 4

Thank you for choosing a Spencer product

1 GENERAL INFORMATION

1.1 AIM AND CONTENTS

The aim of this manual is to supply all the information necessary so that the client, will not only attain adequate use of the appliance, he will also be capable of using the instrument in the most autonomous and secure way possible. This includes information regarding technical aspects, functioning, maintenance, spare parts and safety.

1.2 CONSERVATION OF THE INSTRUCTION MANUAL

The instruction and maintenance manual must be kept with the product, inside the specially provided container and above all, away from any substances or liquids which could compromise perfect legibility.

1.3 SYMBOLS USED

SYMBOL	MEANING
	See instructions for use.

1.4 SERVICING REQUESTS

For any information regarding the use, maintenance and installation, please contact the Spencer Customer Care Service on 0039 0521 541111 - fax 0039 0521 541222 - e-mail: info@spencer.it or write to Spencer Italia S.r.l. - Strada Cavi, 7 - 43044 Collecchio (Parma) - ITALY.

1.5 DEMOLITION

Follow the current regulations.

1.6 LABELLING

The serial number as indicated below can be found on each appliance and must not be removed or covered. In order to facilitate assistance please indicate or communicate the lot number (LOT) on the label.

2 WARNINGS

2.1 GENERAL WARNINGS

- Before carrying out any kind of operation on the appliance, the operator must carefully read the enclosed instructions, paying particular attention to the correct safety precautions and to the procedures to be followed for installation and for correct use.
- In the case of any doubts as to the correct interpretation of the instructions, please contact Spencer Italia S.r.l., for any necessary clarifications.
- Regularly check the appliance.
- In the case of any abnormalities or damage to the appliance, which could jeopardize the functioning and the safety, the appliance must be immediately removed from service.
- Do not alter or modify in any way the appliance; any such interference could cause malfunctions and injury to the patient and/or rescuer.
- The appliance must not in any way be tampered with. In such cases all responsibility will be denied for any malfunctions or injuries caused by the appliance itself. Those who modify or have modified, prepare or have prepared medical appliances in such a way that they no longer serve the purpose for which they were intended, or no longer supply the intended service, must satisfy the valid conditions for the introduction onto the market.
- Ensure that all the necessary precautions are taken in order to avoid the hazards that can arise as the result of contact with blood or body fluids.
- Handle with care.

2.2 SPECIFIC WARNINGS

- The device can be used on by operators who have received adequate training and after having carefully read this manual.
- Make sure that the IV holder is not bumped or banged.
- Protect the device from dirt and humidity.

2.3 CONTRAINDICATIONS AND SIDE EFFECTS

The use of this device, if used as described in this manual, does not present any contra-indications or collateral effects.

3 DESCRIPTION OF PRODUCT

3.1 INTENDED USE

The built in IV holders described in this manual are ideal for use inside ambulances and rescue vehicles. Their function is to support and protect the containers of medical liquids used for the intra venal infusion of medicines. These devices offer a considerable reduction of oscillation which could damage the liquid containers.

The Spencer built in IV holders are manufactured in die cast aluminium (TRACK 9) or in nylon (TRACK 6 / TRACK 6 TWIN) and can be assembled onto the ceiling of the ambulance. They are adapt for use with traditional glass bottles (though no longer compliant with the EN 1789) or with the bags.

3.2 MAIN COMPONENTS

TRACK 6 e TRACK 6 TWIN IV holders have:

- main structure in nylon
- nylon hook (TRACK 6) or nylon and steel (TRACK 6 TWIN)
- wraps to hold the bag with Velcro® closure (only TRACK 6 TWIN)

TRACK 9 IV holder has:

- main structure in die cast aluminium
- steel hook
- wraps to hold the bag with Velcro® closure

3.3 MODELS

TRACK 6 Built in IV-bottle holder	IF01050B
TRACK 6 TWIN Built in double IV-bottle holder	IF01060B
TRACK 9 Built in IV-bottle holder in aluminium	IF01054B

3.4 TECHNICAL DATA

	Maximum external dimensions (mm)	Internal dimensions of cavity (mm)	Material
TRACK 6	280 x 150 x h35	240 x 110 x h20	nylon
TRACK 6 TWIN	280 x 150 x h35	240 x 110 x h20	nylon
TRACK 9	255 x 125 x h30	230 x 100 x h25	aluminium

3.5 ENVIRONMENTAL CONDITIONS

Store the device in the correct and suitable conditions and as indicated below.
Functioning and storage temperature: from -10 to +50 °C
Relative humidity: from 15 to 85%

4 OPERATING INSTRUCTIONS

4.1 TRANSPORT AND STORAGE

Before transporting the appliance, make sure that it is correctly packaged ensuring also that there are no risks of shocks, bumps or falls during the transport itself. Keep the original packaging for use in case of any further transport. Damage to the appliance caused during transport and handling is not covered by the guarantee. Repairs or replacement of the damaged parts are the responsibility of the client. The appliance must be stored in a dry place free from humidity.

4.2 PREPARATION

On receipt of the product:

- Remove the packaging and display the material so that all components are visible.
- Check that all the components/pieces on the accompanying list are present.



The appliance must be checked before every use so as to reveal any working abnormalities and/or damage caused by transport and/or storage.

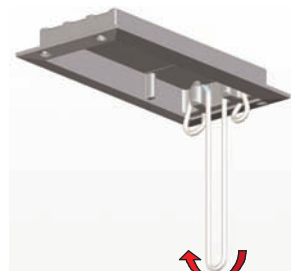
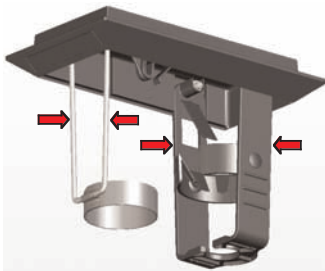
4.3 FUNCTIONING

Assembly of the built in IV holder into the recess of the emergency vehicle should be carried out by the car builder. Normally it is fixed into the ceiling where a cavity has been prepared. Once the cavity for the device has been prepared, the structure must be screwed in. For TRACK 6 and TRACK 6 TWIN using 4 TPSEI M6 screws Class 10.9. For TRACK 9 using 4 TPSEI M5 screws Class 10.9. The screws should be inserted in each of the four holes present on the structure of the device.



To assemble the device on fragile supports (ex. fibreglass, ABS, etc.) we advise the use of a matrix (not supplied).

For the models TRACK 6 and TRACK 6 TWIN, once fixed in position, apply the labels in the correct position which will also cover the fixing screws. For models TRACK 6, TRACK 6 TWIN and TRACK 9, in order to put the device in the correct functioning mode, just lower the moving parts until they automatically block themselves. When TRACK 9 is not in use, just fold the moving parts back up. For TRACK 6 and TRACK 6 TWIN, unblock by pushing towards the centre and then fold upwards as shown in the picture.



It is essential that the following check routine is carefully carried out before and after each use of the device.

This routine will include the following aspects:

- Functioning
- Device condition
- Device completeness



ATTENTION!

ONLY MODEL TRACK 6 (code IF01050B) AND TRACK 6 TWIN (code IF01060B) ARE CERTIFIED IN CONFORMITY WITH THE EN 1789 NORMATIVE. THE PRODUCT CANNOT BE CONSIDERED AS CONFORM TO THIS NORMATIVE IF USED WITH GLASS BOTTLES.

4.4 TROUBLESHOOTING

PROBLEM	CAUSE	REMEDY
Device is unattached from the support	Incorrect assembly	Make sure that the various components have been correctly assembled and if necessary re assemble
The fixing system for the bottle, sack does not move sufficiently	The device has not been assembled correctly, Factory defect	Remove from use and contact the manufacturer
The steel/nylon hook is broken and/or the wraps for the bottle/sack are worn	Materials in use not adapt, Factory defect	Remove from use and contact the manufacturer
Device structure is not intact	Vibrations, bumps, drops	Remove from use and contact the manufacturer

5 MAINTENANCE AND CLEANING

5.1 CLEANING

The device must be cleaned after each use. It is especially important that the hook and the wraps are disinfected so as to avoid contamination caused by secretions, blood and any other liquid which could have contaminated the device during rescue operations. The products used to clean the device must be adapt for use on the material the device is made of so as to avoid any possibility of damage which could cause low performance and/or consequent poor functioning.

5.2 MAINTENANCE

5.2.1 Precautionary Maintenance

A routine maintenance programme is not necessary.

Please remember that the condition of the device must be checked before each use.

5.2.2 Special servicing

Only the manufacturer or centres with written authorisation are authorised to complete any special servicing operations.

The device, if used as indicated in the following instruction manual, has an average life span of 5 years.

6 ACCESSORIES AND SPARE PARTS

There are no accessories or replacement parts for these items.

Warning

The information contained in this document could be modified without any warning and is not to be intended as a commitment on behalf of Spencer Italia S.r.l. Spencer products are exported to many countries and the same identical regulations are not always valid. For this reason there could be differences between the description here described and the product actually delivered. Spencer continually strives to reach the perfection of all items sold. We therefore hope you will understand if we reserve the right, at any time, to modify the shape, equipment, lay-out or technical aspects that are herein described.

© Copyright Spencer Italia S.r.l.

All rights reserved. No part of this document can be photocopied, reproduced or translated into another language without the written approval of Spencer Italia S.r.l.