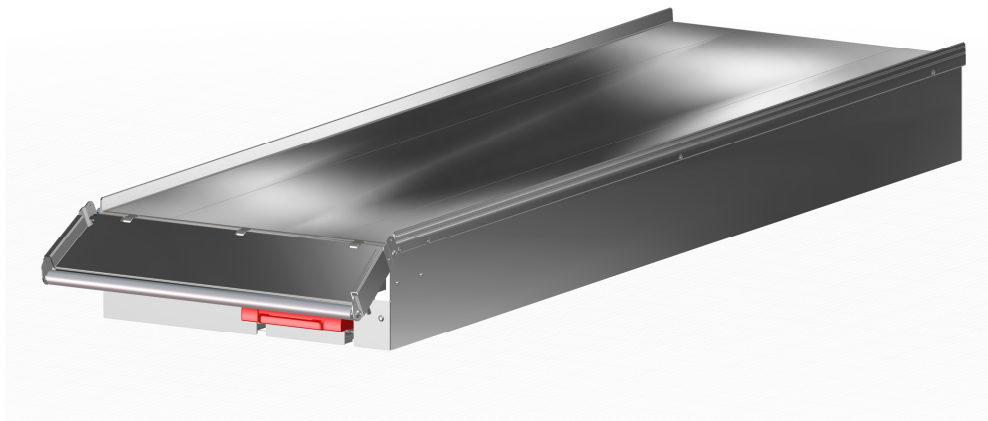


BOB

Stretcher support



The slide shown in the picture is optional

Stretcher support intended for installation on ambulances. The device can be moved sideways, allowing easy access to the stretcher.

Specific features

The structure of the support plane makes it non-deformable
 Loading system with roller (slide optional)
 Dedicated compartment to store immobilization systems like spinal boards or pick-up stretchers.
 Extruded aluminum board easy to clean
 Sideways movement handles, placed on front and back side, are easily accessible

Reference standard

10g tested according to EN1789:2007+A2:2014

Optionals

BO10100 – Slide 120 mm
 BO10101 – Slide 180 mm
 BO10102 – Slide 350 mm

Technical data

Max Length (Excluding slide)	2010 mm
Max Width (excluding slide)	600 mm
Support surface area	1920x580 mm
Support surface height	210 mm
Sideways movement	300 ± 10 mm
Materials	Al, Steel, Nylon
Loading capacity	300 kg
Weight	45 ± 10 kg

Device in compliance with dir. 2006/42/CE

BO10011C - BOB - SIDEWAYS MOVABLE
 STRETCHER SUPPORTMOVEMENT



Rev.0 (03/12/2018)

UNCHECKED COPY – further revisions will be available on <http://support.spencer.it>
 Spencer Italia S.r.l. Sala Baganza (PR) Italia Tel. +39.0521.541111 Fax +39.0521.541222

spencer.it