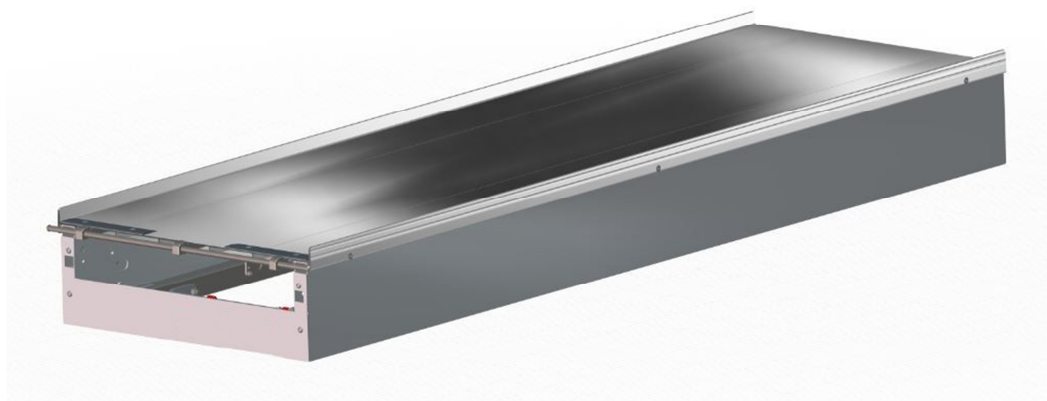


BOB TYPE 1F 21

Stretcher support



Stretcher support intended for installation on ambulances.

Specific features

The structure of the support plane makes it non-deformable
 Loading system with roller (slide optional)
 Dedicated compartment to store immobilization systems like spinal boards or pick-up stretchers.
 Extruded aluminum platform easy to clean

Technical data

Length	2010 mm
Width	600 mm
Platform height	210 mm
Platform dimensions	1920x580 mm
Materials	Al, Steel, PE, Nylon
Loading capacity	300 kg
Weight	42 ± 10 kg

Reference standard

10g tested according to EN1789:2007+A2:2014

Accessories

BO10100 – Slide 120 mm
 BO10101 – Slide 180 mm
 BO10109 – Slide 350 mm
 BO10108 – Slide 500 mm

BO10013 - BOB TYPE 1 F 21 - FIXED
 STRETCHER SUPPORT

Rev.0 (05/03/2020)

UNCHECKED COPY – further revisions will be available on <http://support.spencer.it>
 Spencer Italia S.r.l. Sala Baganza (PR) Italia Tel. +39.0521.541111 Fax +39.0521.541222

spencer.it