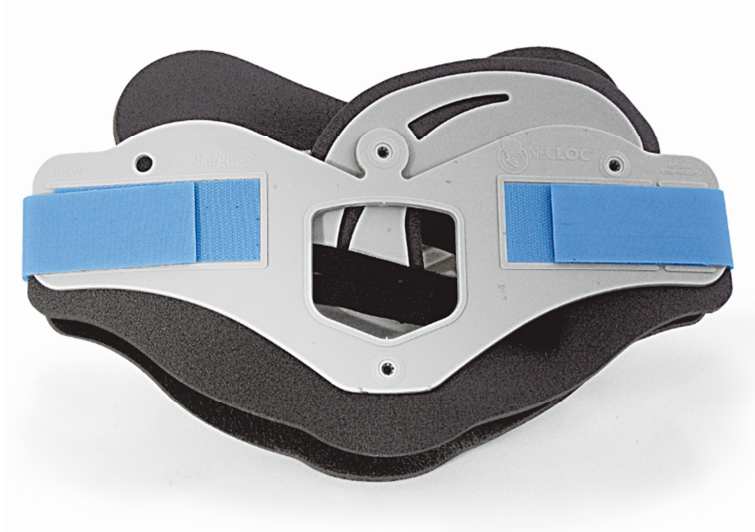


NEC LOC

Cervical collar



Bivalve cervical collar designed for use in first aid and emergency situations. It's identified as a solution for the immobilization of the cervical spine in trauma patients.

Specific features

- Quick application due to strap closure
- Access for tracheotomy
- Comfortable soft padding

Technical data

Size	LARGE
Materials	PE/Plastizote

Class I Med.Device according to Dir. 93/42/CEE

NEC LOC SIZE 8 (LARGE)-
TWO-PIECE RIGID CERVICAL
COLLAR

JM10060A



Distributed by Spencer Italia S.r.l.

Rev.0 (18/07/2017)

COPIA NON CONTROLLATA – successive revisioni saranno disponibili al link <http://support.spencer.it>
Spencer Italia S.r.l. Sala Baganza (PR) Italia Tel. +39.0521.541111 Fax +39.0521.541222

www.spencer.it