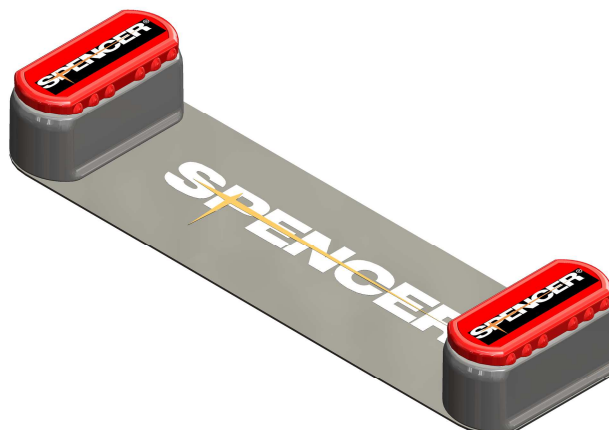


Wall support

For Baby Go pediatric spine board



Wall support for pediatric spinal board Baby Go.

Specific features

Easy to install
Simple to use
Consists of two fasteners that shall be installed on the wall by means of two screws

Technical data

Dimension of each fastener	282 x 80 x 38 mm
Materials	Nylon
Weight	150 kg

Class I MD compliant with UE Reg. 2017/745

WALL FIXATION FOR BABY GO

ST02144B

CND classification



V0804

Rev.0 (14/06/2021)

UNCHECKED COPY – further revisions will be available on <http://support.spencer.it>
Spencer Italia S.r.l. Sala Baganza (PR) Italia Tel. +39.0521.541111 Fax +39.0521.541222
www.spencer.it